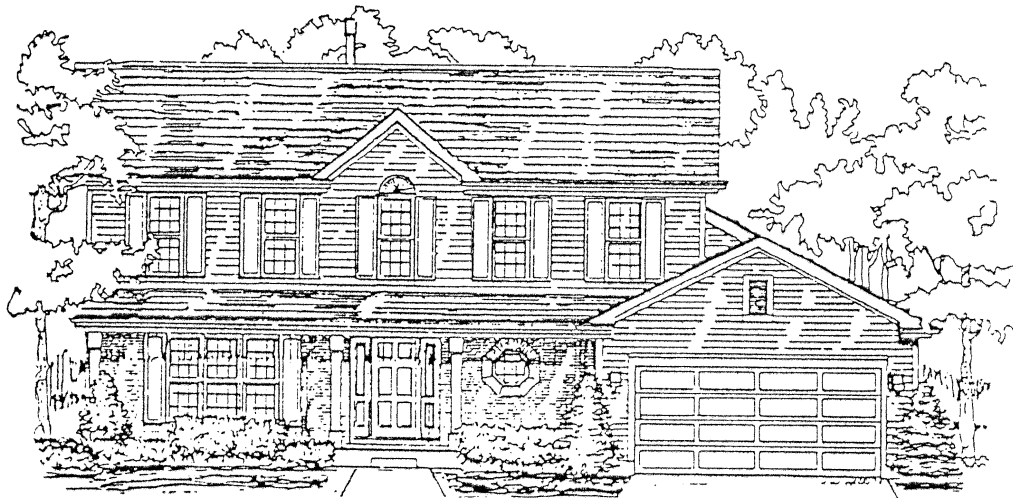


# HEEDUM

---

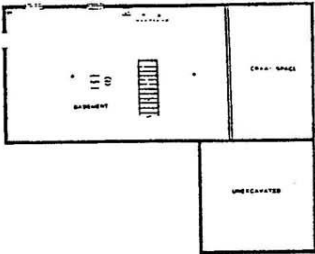


7 W. White Barn Road  
Vernon Hills, IL 60061  
312-913-8877

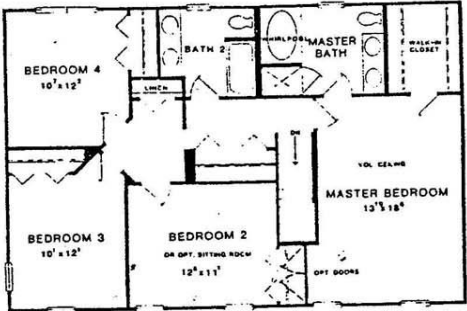
# Heedum (2422 ft<sup>2</sup>)

This two-story home offers a beautiful open design that caters to casual and formal living in a unique way. The Heedum's foyer opens either to a formal living room or to a pass-way and large family living area beyond. Evening gatherings or dinner parties are easily accommodated in the formal dining room. The floor plan of the Heedum skillfully combines the kitchen, a breakfast area and the family room into a large 'great room' that is perfect for everyday family living. The unique garden (or garden room/den combination) is some houses have an optional see through fireplace. This room adds openness and a luxurious touch to a striking design. You will find the garden room perfect as a day-to-day casual room or an ideal setting for cocktail parties and informal entertaining. It will be a welcomed addition to your home. Upstairs, one finds four large bedrooms including a master bedroom with its private master bath and large walk-in closet. A second full bath is located near the three additional large upstairs bedrooms. A two-car garage, main floor powder room and large basement complete a design that offers a versatile approach to traditional single-family living.

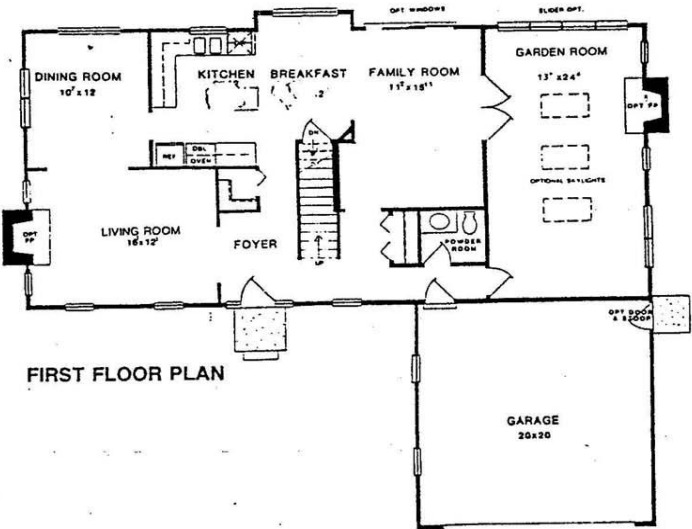
## Stone Fence Farms Heedum Model



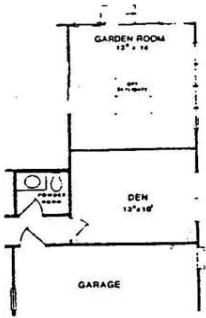
BASEMENT SHOWN 1/2 SIZE



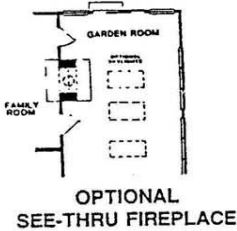
SECOND FLOOR PLAN



FIRST FLOOR PLAN



PARTIAL PLAN  
FOR OPTIONAL DEN



OPTIONAL  
SEE-THRU FIREPLACE